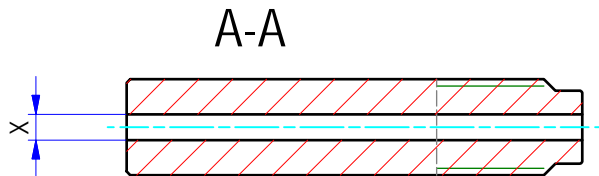
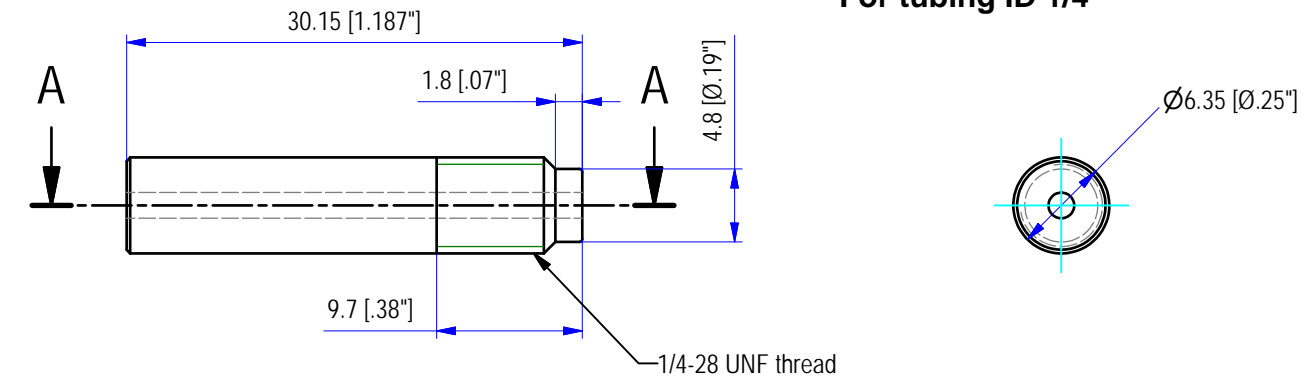
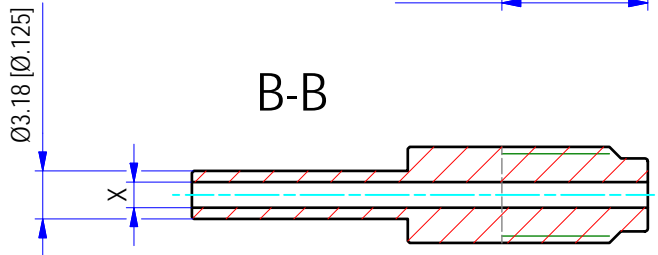
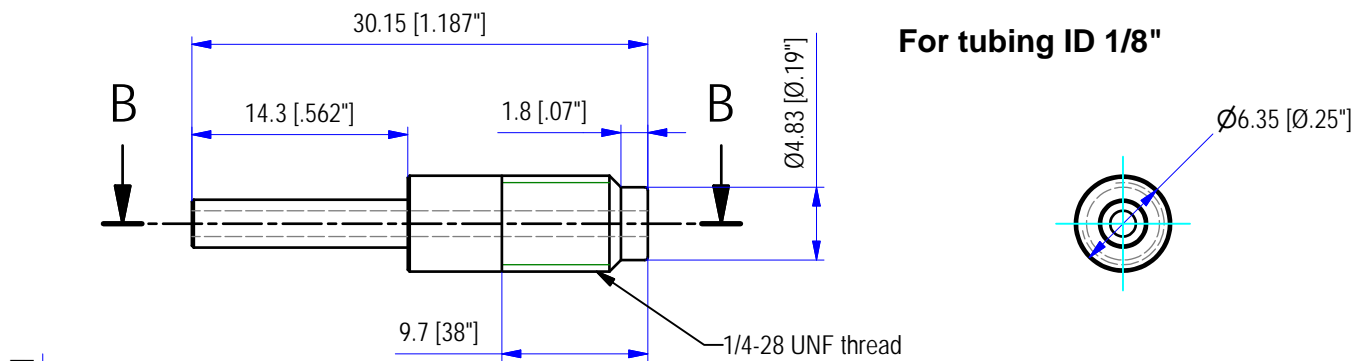


For tubing ID 1/4"



| Part# | X | Material |
|--------|---------------|---------------|
| CTA4S6 | Ø1.7 [Ø.067"] | 316 Stainless |
| CTA4KF | Ø1.5 [Ø.06"] | CTFE (KEL-F) |
| CTA4PK | Ø1.5 [Ø.06"] | PEEK |

For tubing ID 1/8"



| Part# | X | Material |
|--------|---------------|---------------|
| CTA2S6 | Ø1.7 [Ø.067"] | 316 Stainless |
| CTA2KF | Ø1.5 [Ø.06"] | CTFE (KEL-F) |
| CTA2PK | Ø1.5 [Ø.06"] | PEEK |

Dimension in mm [Inch]

THIS DOCUMENT AND THE INFORMATION WHICH IT CONTAINS SHALL NOT BE USED, EXPLOITED OR SOLD, AND SHALL NOT BE REVEALED OR DISCLOSED TO OTHERS WITHOUT THE EXPRESS WRITTEN PERMISSION OF VICI. THIS DOCUMENT SHALL REMAIN THE PROPERTY OF VICI AND SHALL BE RETURNED UPON DEMAND.

| | |
|--------------------------|--|
| Material MATERIAL | Dimensionen DIMENSIONS |
| Projektion PROJECTION | Allgemein Toleranzen GENERAL TOLERANCES |
| | SN EN 22768-1/ ISO 2768 |

Aenderungen:
MODIFICATIONS:

PART NO.:
CTA*

Tube adapter

| | | | |
|-----------------------------|--|------------|------|
| Masstab SCALE 2:1 | Gezeichnet DRAWN | 30.07.2008 | F.P. |
| | Geprüft / Freigabe CHECKED/ RELEASE | 30.07.2008 | FCo |
| | CAD Nr. CAD NO. | 506338.idw | |

General dimensions

Unterverz.:
SUB DIREC.: KUNDE

VICI[®] VICI AG International, CH-6214 Schenkon

Zeichnungs Nr. / DRAWING NO.
4-GE-5063.38